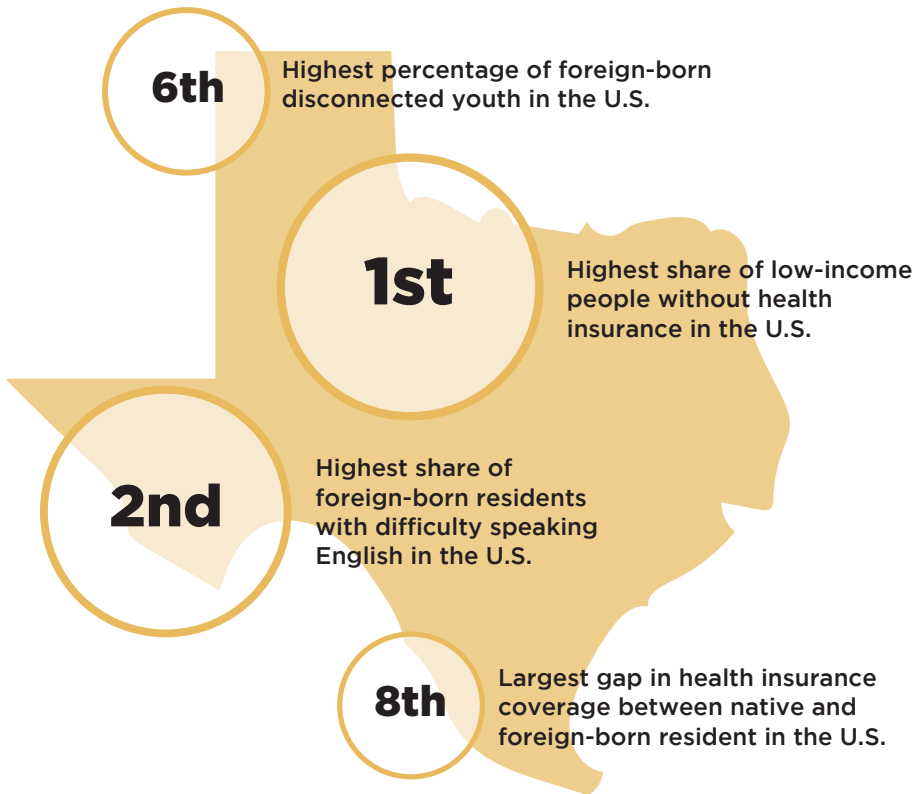


JUSTSOUTH INDEX 2019 FACT SHEET

TEXAS

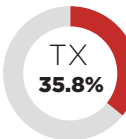
JUSTSOUTH INDEX RANKINGS (OUT OF 51)

POVERTY	RACIAL DISPARITY	IMMIGRANT EXCLUSION	OVERALL
50	40	47	49

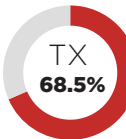


TX
\$16,580

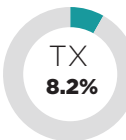
Average Income of Poor Households



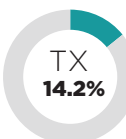
Percent of Poor without Health Insurance



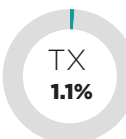
Percent of Poor with High Housing Cost Burden



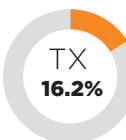
Percent of Segregated Schools



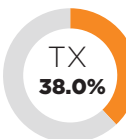
White-Minority Wage Gap



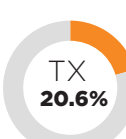
White-Minority Unemployment Rate Gap



Share of Immigrant Disconnected Youth



Share of Immigrants with Difficulty Speaking English



Gap in Health Insurance Rate, Immigrant and Native-Born Residents

ACTION STEPS

- ✓ Expand Medicaid coverage as provided for in the Affordable Care Act (ACA) and make available resources to educate all residents about the various benefits available to them via the ACA.
- ✓ Support foreign-born youth by increasing funding and access to GED and job training programs.
- ✓ Assist non-English speakers by increasing funding and access to educational support services such as English as a Second Language (ESL) courses and community-based language instruction.
- ✓ Legislate a state minimum wage significantly higher than the federal minimum of \$7.25 per hour and rescind the 2003 preemption law banning municipal minimum wages.