



Louisiana

JustSouth Index State Report Card

DIMENSION INDICES

Poverty

50

Louisiana ranks 50 out of 51 in the Poverty Dimension, which is a reflection of state leaders' unwillingness to: increase the minimum wage, enhance the state's Earned Income Tax Credit program, or to expand Medicaid eligibility to cover the poorest Louisianans. Additionally, housing and child care assistance programs only reach a fraction of those who need help due to low investment by the state. [Dimension Index Score: .32 out of 1]

Racial Disparity

49

Louisiana ranks 49 of 51 in the Racial Disparity Dimension, which is attributable to the large gap in earnings between white and minority workers in similar occupations and high rates of unemployment for non-white job seekers. While Louisiana does have a state law barring employment discrimination based on race, the state must enhance its investigative and educational activities to ensure that all workers have an equal opportunity to earn a fair wage. Further, the percentage of schools segregated by race in Louisiana is significantly higher than in other states. [Dimension Index Score: .44 out of 1]

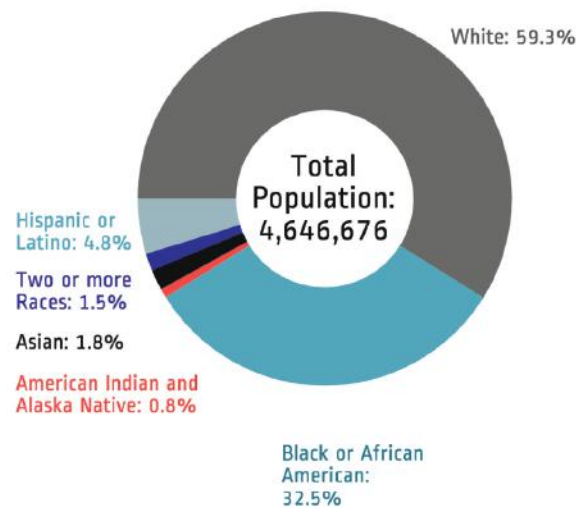
Immigrant Exclusion

48

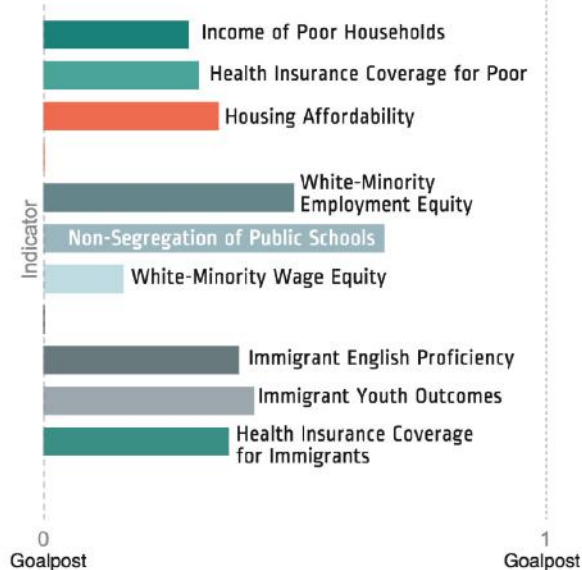
Louisiana ranks 48 out of 51 in the Immigrant Exclusion Dimension due the large gap in the health insurance rates of immigrants compared to native-born residents and a high rate of immigrant youth who are not attending school or working. Through increasing services for immigrant workers, families, and youth, state and local leaders can ensure that immigrants are able to successfully integrate into Louisiana communities. [Dimension Index Score: .39 out of 1]

JUST SOUTH INDEX RANKING **51**

2014 State Population by Race

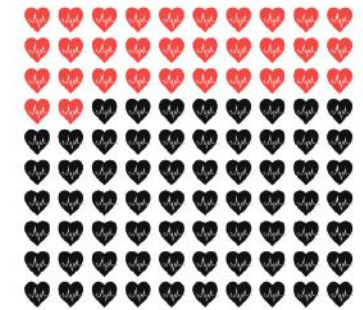
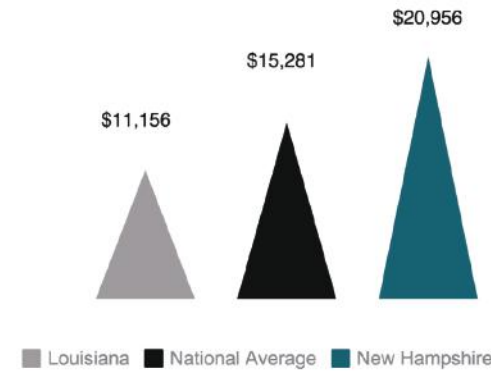


Individual Indicator Scores (0 to 1 Goalpost Scoring)



Poverty Dimension

Average Income of Poorest 25% of Households



Share of Poor Without Health Insurance: **32%**

Racial Disparity Dimension



More than 1 in 5 Louisiana public schools are segregated by race.

Gap in Unemployment Rates Between White and Minority Workers

10.0% Minority workers unemployed

4.2% White workers unemployed

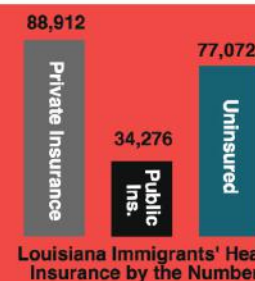


When controlling for age, educational level, and occupation, minority workers in Louisiana earn 79 percent of what their white counterparts earn.

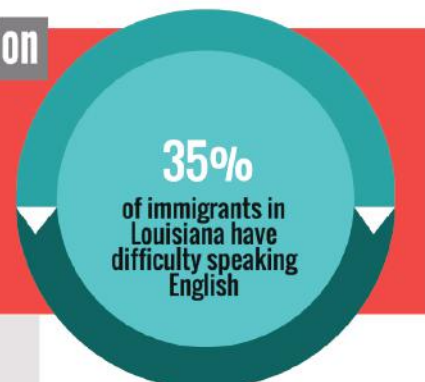


Minority workers' earnings compared to white workers' earnings with similar experience and occupations.

Immigrant Exclusion Dimension



Only 59 percent of immigrants in Louisiana have public or private health insurance coverage, compared to 86 percent of the native-born population.



SOURCES: U.S. Census Bureau, American Community Survey, 2014; U.S. Bureau of Labor Current Population Survey, 2014; National Center for Education Statistics, 2012-2013; See full JustSouth Index Report Indicators & Methodology sections for detailed description of analyses.