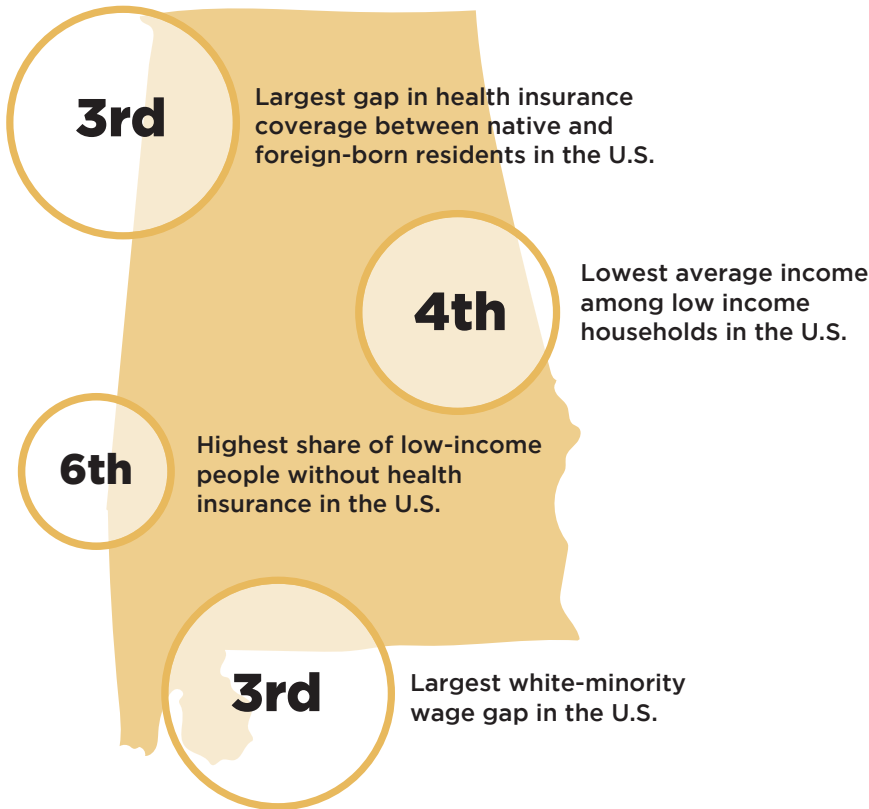


# JUSTSOUTH INDEX 2019 FACT SHEET

## ALABAMA

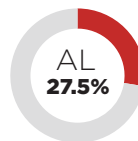
### JUSTSOUTH INDEX RANKINGS (OUT OF 51)

<b>POVERTY</b>	<b>RACIAL DISPARITY</b>	<b>IMMIGRANT EXCLUSION</b>	<b>OVERALL</b>
<b>49</b>	<b>49</b>	<b>44</b>	<b>48</b>

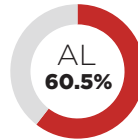


AL  
**\$12,185**

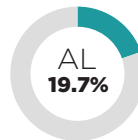
**Average Income of Poor Households**



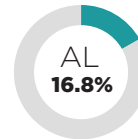
**Percent of Poor without Health Insurance**



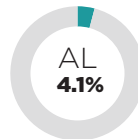
**Percent of Poor with High Housing Cost Burden**



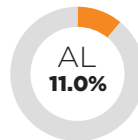
**Percent of Segregated Schools**



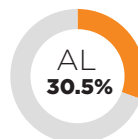
**White-Minority Wage Gap**



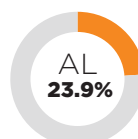
**White-Minority Unemployment Rate Gap**



**Share of Immigrant Disconnected Youth**



**Share of Immigrants with Difficulty Speaking English**



**Gap in Health Insurance Rate, Immigrant and Native-Born Residents**

## ACTION STEPS

- ✓ Legislate a state minimum wage significantly higher than the federal minimum of \$7.25 per hour and rescind the 2016 preemption law banning municipal minimum wages.
- ✓ Expand Medicaid coverage as provided for in the Affordable Care Act (ACA) and make available resources to educate all residents about the various benefits available to them via the ACA.
- ✓ Aggressively investigate discriminatory labor practices.
- ✓ Enact a state Earned Income Tax Credit program.